

A VILLAGE FOR EVERY CHILD



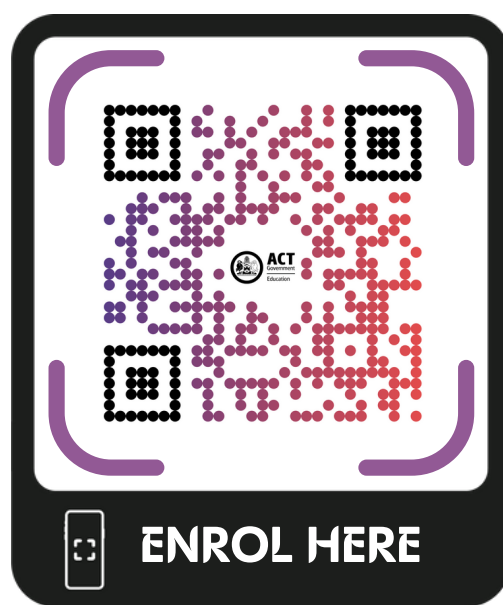
Belconnen

@BelconnenVillage

belconnenvillage.com.au



PUBLIC SCHOOL ENROLMENT TIME!



What you need to know about enrolling your child in a public school!

PRESCHOOL

If your child turns four on or before 30 April, they can start preschool the first day of term 1 that year.

If your child turns four after 30 April, they can start preschool the first day of term 1 the following year.

KINDERGARTEN

If your child turns five on or before 30 April, they can start kindergarten the first day of term 1 that year.

If your child turns five after 30 April, they can start kindergarten the first day of term 1 the following year.

ENROLMENT OPENING

Enrolments open in week 1 term 2 for the following school year. Once open, enrolments never close. However, if you apply by early-June, you will receive a school offer from late-July.

Keep an eye on the Education Directorate website for this year's key enrolment dates.

PRIORITY ENROLMENT AREA

The ACT is divided into Priority Enrolment Area (PEAs). What suburb and street you live in will determine which public school your child can go to. Every child from Kindergarten to Year 12 is guaranteed a place at their Priority Enrolment Area School.

ENROLMENT OUTSIDE OF PEA

ACT residents can apply to any ACT public school at any time using the enrolment application form. This does not guarantee your child will be accepted at the school. Applications will be prioritised against standard criteria. Some schools have more spots available for out of area students than others.

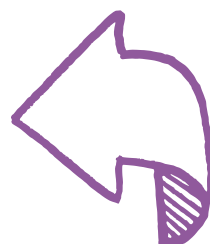
APPLY FOR PRESCHOOL

You are encouraged to apply for the preschool at your local primary school which offers easier transition to kindergarten. All preschools offer a high-quality early childhood education.

Aboriginal and Torres Strait Islander children aged 3-5 may attend pre-school and Koori Preschool at the same time or attend either. Koori Preschool offers a play-based, culturally safe learning program

ENROLMENT RESOURCES

Take a look at this additional information. You will find more information on enrolling including links to Preschool Pathways, transitions, Koori preschool, supports for parents, disability information, financial and resource assistance and learning supports.



CONTACT

If you need help or have additional questions, please contact your local school or the Education Directorate

02 6205 5429

education.enrolment@act.gov.au