

A VILLAGE FOR EVERY CHILD



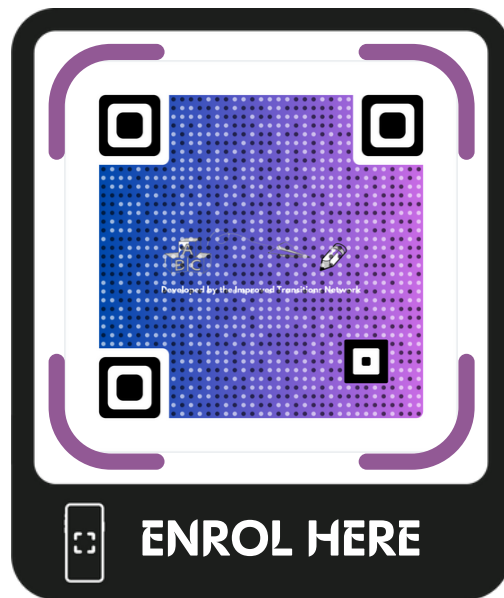
Belconnen

@BelconnenVillage

belconnenvillage.com.au



PUBLIC SCHOOL ENROLMENT TIME!



OPENS 26 APRIL

What you need to know about enrolling your child in a public school!

PRESCHOOL

If your child turns four on or before 30 April, they can start preschool the first day of term 1 that year.

If your child turns four after 30 April, they can start preschool the first day of term 1 the following year.

KINDERGARTEN

If your child turns five on or before 30 April, they can start kindergarten the first day of term 1 that year.

If your child turns five after 30 April, they can start kindergarten the first day of term 1 the following year.

ENROLMENT OPENING

Online enrolment for the 2024 school year will open on 26 April. Once open enrolments never close. However, if you apply by 2 June, you will receive a school offer from 24 July.

Applications put in after the 2 June will receive an offer later in the year. The earlier you enrol, the sooner you and the school can connect to support your child's transition.

PRIORITY ENROLMENT AREA

The ACT is divided into Priority Enrolment Area (PEAs). What suburb and street you live in will determine which public school your child can go to. Every child living within a School's Priority Enrolment Area is guaranteed a Kindergarten to year 12 place at that school.

ENROLMENT OUTSIDE OF PEA

ACT residents can apply to any ACT public school at any time using the enrolment application form. This does not guarantee your child will be accepted at the school. Applications will be prioritised against standard criteria. Some schools have more spots available for out of area students than others.

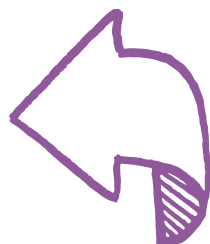
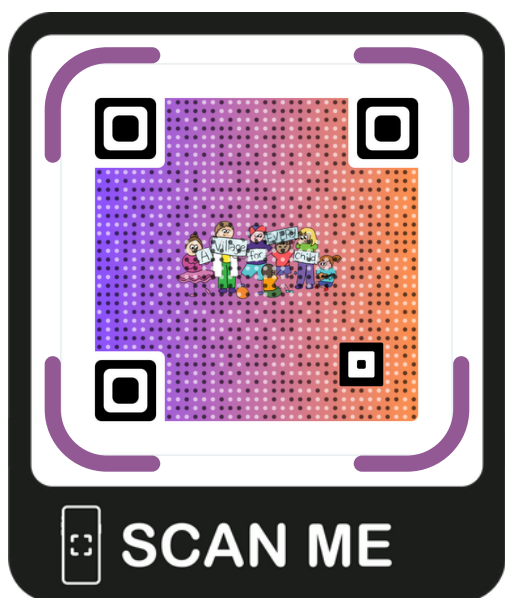
APPLY FOR PRESCHOOL

You are encouraged to apply for the preschool at your local primary school which offers easier transition to kindergarten. All preschools offer a high-quality early childhood education.

Aboriginal and Torres Strait Islander children aged 3-5 may attend pre-school and Koori Preschool at the same time or attend either. Koori Preschool offers a play-based, culturally safe learning program

ENROLMENT RESOURCES

Take a look at this additional information. You will find more information on enrolling including links to Preschool Pathways, transitions, Koori preschool, supports for parents, disability information, financial and resource assistance and learning supports.



CONTACT

If you need help or have additional questions, please contact us at this centre, your local school or the Education Directorate

02 6205 5429

education.enrolment@act.gov.au