



A Village for Every Child | Update September 2022

Belconnen - A Village for Every Child believes that by improving collaboration and committing to community engagement, *all children in Belconnen can be physically healthy, socially, and emotionally strong, and ready to engage fully in learning and life.*

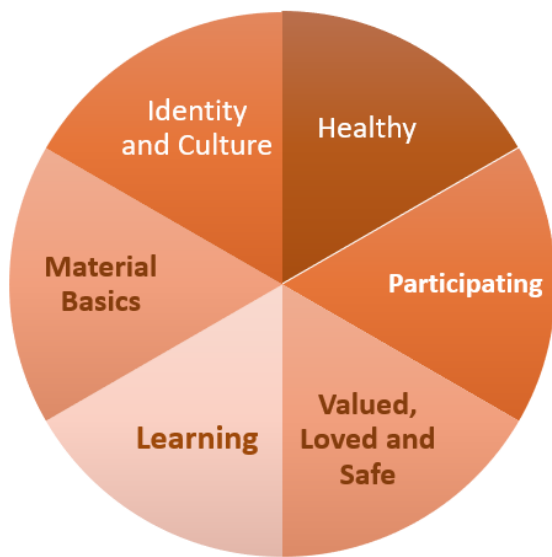
What's been happening in A Village for Every Child?

This quarter continued to be busy for Village, with some significant momentum gained with the delivery of a series of workshops and progress in each of the Working Groups. Village was really pleased to be able to deliver these workshops as part of its first phase of engaging with the broader Belconnen community. These workshops included the Australian Early Development Census ([AEDC](#)) and Belconnen Child and Family Community Profile workshops.

The AEDC workshops were delivered in partnership with the AEDC team in the Community Services Directorate (CSD) and focused on the most recent AEDC data (2021) for Belconnen. This data highlighted a concerning trend that tells us more children in the ACT, particularly Belconnen, are experiencing increased levels of developmental vulnerability. Thanks to Tracy Power for presenting with Village.

The Community Profile Workshops explored the ARACY Nest and asked attendees to consider what wellbeing looks like for children and families in Belconnen, framed under the six wellbeing domains of the Nest:

The Nest Wellbeing Domains - ARACY



The aim of these workshops was to help us select the most important indicators of child wellbeing in Belconnen and start to help us understand our Belconnen community better by capturing views of different stakeholders across the Belconnen community, including families.

What's been going on in the Working Groups?



Improved Transitions to School Working Group

This Working Group has been focusing on the development of the **Improved Transitions Network** which is for Early Childhood Education and Care services (ECECs) and schools to come together to partner to better support the transition of children and families into formal education (pre-school or kindergarten) from their ECEC service. The key focus of this group is to improve relationships between the ECEC sector and schools in Belconnen with members sharing current transition practices and developing some shared strategies to support children and their families transitioning from the ECEC service to school. The network will start small with the six ECEC centres in the Working Group and nine schools, all based in Belconnen. The flow of children from the ECEC centres to schools was mapped and this told us is that the context in which we are operating in the ACT is quite unique, with children on average (across the six centres we mapped) travelling to nearly 10 different schools across Belconnen and some outside of Belconnen. This information was critical in considering effective ways of supporting transitions. The mapping helped identify which schools to invite into the network, with the schools with the highest numbers transitioning to them selected first. Other schools were included based on the AEDC data where it told us that there are higher levels of developmental vulnerability in that community. The response from schools has been fantastic and conversations with each of them have helped further refine the planning for the Network. We look forward to hosting the first meeting in week 6 this term.

Other activities being undertaken by this group include supporting the implementation and roll out of the ACT transition statement that will provide important information about a child to the school, early enough

so that schools can prepare for new students. Feeding into this are the outcomes from the recently completed research project led by [ARACY](#) which involved interviewing staff from schools in Belconnen about their experience and challenges with transitions and their information needs about new children coming into the school.

As we wind up for the year and consider what needs to be in place for 2024 transitions, attention will be given to developing a media campaign in the ECECs. This campaign will provide information about the enrolment process, local schools, child development and the importance of transitions. It hopes to build the narrative around child development, normalising conversations with families and creating an expectation that sharing information about a child to their school is a really important for the child to be effectively supported.

This quarter we were excited to welcome a new co-chair, Emma-Jayne Peard, Manager Education and Care from [CRCS](#). We are also really pleased to have Jennifer Nejaim from [Sage Education & Childcare](#) join the Group, bringing a different perspective from the private ECEC sector.



Improved Service and School Connections with Families

With the recent AEDC and Community Profile workshops further highlighting the need for improved connections between services, schools and families, this group has progressed significantly in the last few months.

We are really excited to announce that the Working Group will be trialing the implementation of elements of the community school concept, with an early focus on integrating services into the school community.

The group will be working alongside Evatt Primary School (a Working Group member) under the direction of their *everyone, everyday – A Community United* Strategic Plan. With a particular focus on two of their four pillars which relate closely to the objectives of the Working Group; *wrap around health, wellbeing and community services* and *improving school readiness*.

The approach that is being taken is one of iterative learning whereby services from the Working Group (in the first instance) will be committing to co-locating at the school on a regular basis. Through a try, test and learn approach, they will develop the systems and processes that need to be in place to operate effectively in the school. As this process is embedded, the Working Group will expand into other areas of community schools.



Better Data Working Group

The main focus for this quarter was on designing and delivering the **Belconnen Child and Family Community Profile Workshops** which we were thrilled to be delivering.

The five workshops conducted by Village provided an opportunity for relevant stakeholders and community members to share their views about what is most important for child and family wellbeing in Belconnen. This information was used to form indicators of wellbeing.



"We all have of a great depth of experience and knowledge that these workshops have tapped into. It is great to lean on each other for support and expertise working together and collegiately towards greater wellbeing outcomes for our children. Great to know about other services out there that support children's wellbeing. We need to keep working together"

*"The group interactions were great and speaking to people of different backgrounds"
"It was very interesting to hear how our area is struggling. I'd never heard about certain programs before for example, HIPPIY"*

The next steps for this Working Group will be to collate the indicators that were identified through the workshops, bring these together with other known indicators of wellbeing or vulnerability and start to collect the data that will be included in the Community Profile.

The other area of focus will be on the roadshows which are a critical part of this group's work. These will commence in 2023 which will give the group time to develop an approach that will engage with Belconnen residents in the most effective way. These roadshows will be focused on asking the community to reflect on the data, talk to the story behind the data, and identify what their aspirations for children are and where Village and others might focus our next efforts.



The Leadership Group invited Kylie Burgess, Shared Learning Coordinator, from [Burnie Works](#) to discuss the Burnie Works collective impact initiative and how they have developed their shared measurement, one of the five conditions of [collective impact](#). Kylie gave an impassioned and stimulating presentation to the Leadership Group that challenged our thinking around data ownership, availability and relevance in measuring the work in the collective impact space. She spoke about the challenges of data access and the ability to use what is available to measure impact.

She talked about Burnie Work's decision to move away from the language of shared measurement to shared learning and that this was much more relevant as collective impact in Australia is emergent and our context is different. We are grateful to have Kylie as a learning partner and will continue to connect with her as we move towards developing our shared measurement.

New members

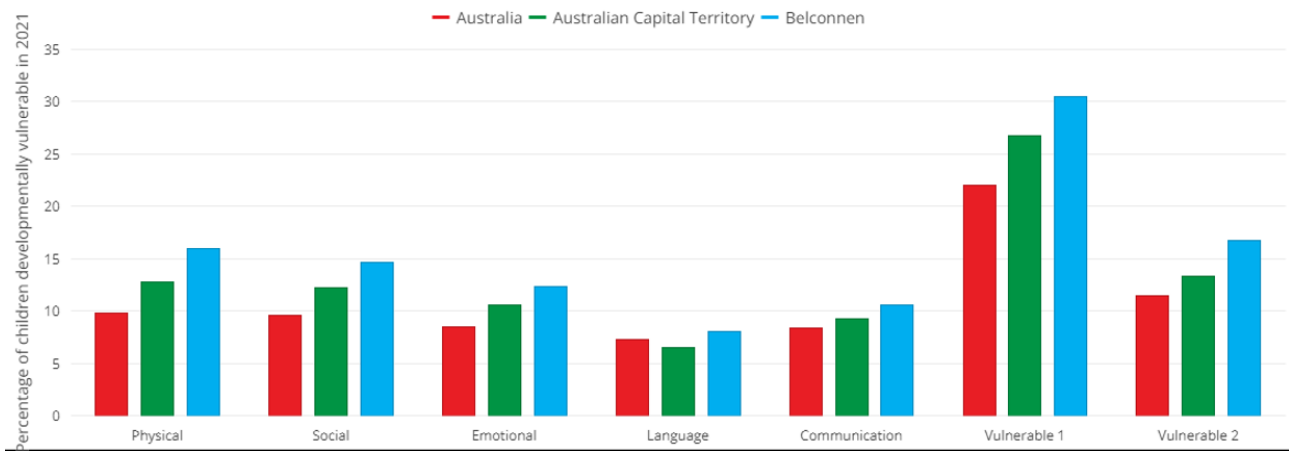
This quarter we welcomed Lee-Anne Daley from [Yerrabi Yurwang](#) and Jessica Summerrell from the Community Services Directorate.



Other News and Projects

AEDC Workshops for ECECs and Schools

Village and the AEDC team delivered three workshops between June and August. Attendees were asked to reflect on the presentation and consider why the data might be trending this way and consider how we can work together to better support our children and families.



"It was great to connect with Tracy and Sarah. I'm hopeful and excited about the possibility to resolve some of the blocks and challenges I've encountered in supporting students and families with additional needs."

"The workshop was a good way to hear others thoughts, clear common concerns across ECEC- Kindy- Primary school"

We were really pleased with the attendance and feedback we received from the AEDC workshops and that they sparked some interest from schools, community members and Early Childhood Education and Care services to work with Village to address some of the issues facing children and families in Belconnen. CSD and Village are producing a joint report which will be found on our website over the next quarter.

Developing Community Schools in the ACT

Village hosted a workshop with Matthew Cox from the [Bryan Foundation](#)! A big thank you to Village partner [ARACY](#) for helping facilitate this connection.

We had an opportunity to hear about the work they are doing at FamilyLinQ in Queensland and facilitate some discussion around developing the concept in the ACT. FamilyLinQ is an exciting collaboration between "The Bryan Foundation and Queensland Government that was officially launched by the Education Minister in 2021. It is Queensland's first integrated school-based hubs initiative, aiming to

improve the health, education and life outcomes for children and their families within school communities. Bringing together education, health and community services under the one roof, [FamilyLinQ](#): will play a key role in school community life and will be co-designed with a community first approach, to enable families to be the centre of school community life.” (The Bryan Foundation, 2022).

Harnessing the Power of Neuroscience to Improve Outcomes for Children and Young People - Nancy Mannix

Village was able to offer an exclusive opportunity (thanks to our partners ARACY) to village partners to host Nancy Mannix to deliver the *Harnessing the Power of Neuroscience to Improve Outcomes for Children and Young People workshop*.

There was a great turnout of Village partners and some rich conversations about how the [Brain Story](#) and Resilience Scale could be applied in context. We had an opportunity to think about how using brain story knowledge can help build capabilities that will allow us to achieve concrete, sustainable improvements in the life trajectories of Belconnen children, especially those living with entrenched disadvantage.

Connected Beginnings

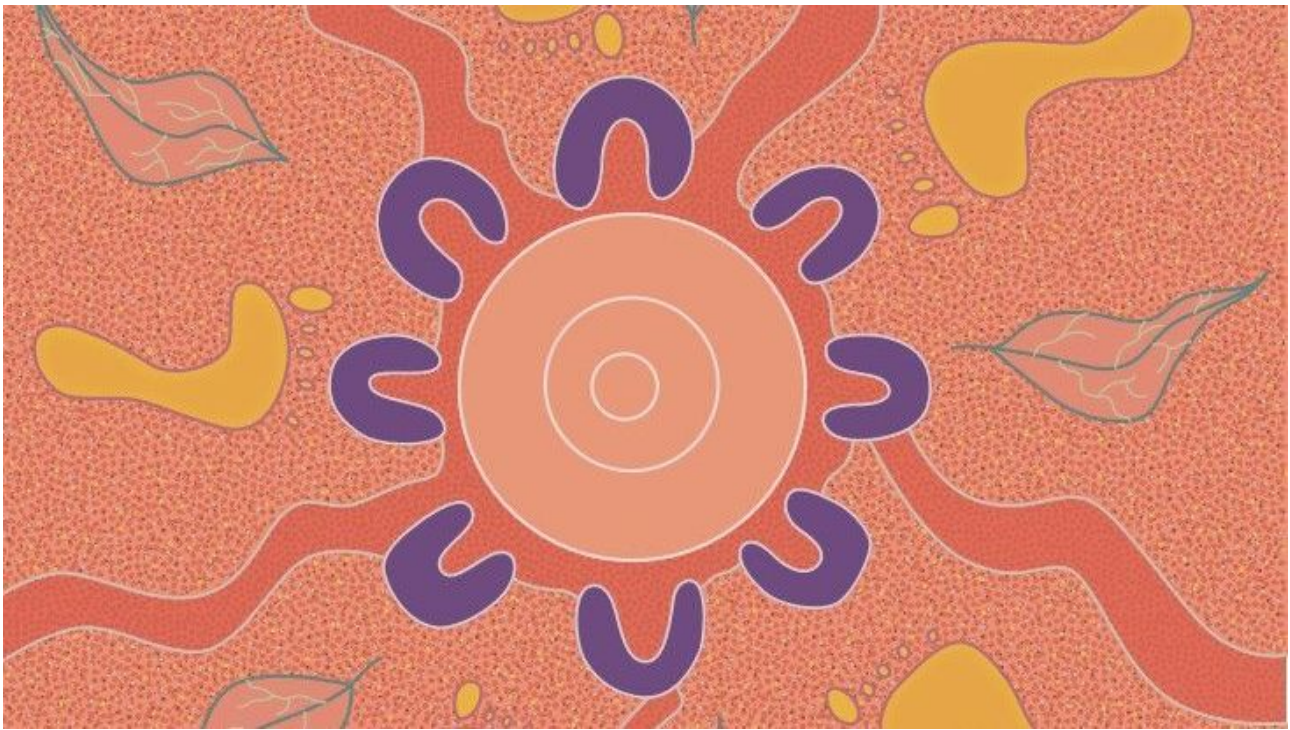
Uniting Care Kippax (UCK) and Yerrabi Yurwang (Yerrabi) have established a collaborative partnership underpinned by a Memorandum of Understanding (MoU). Both Parties will co-host the Backbone team with Yerrabi hosting the Connected Beginnings Community Development Officer and Community Development Support Officer. The two Aboriginal identified positions are currently being advertised, [Community Development Officer](#) and [Community Development Support Officer](#)

Get Involved

Join a Working Group – We are always on the lookout for new members to join our working groups – from schools, child and family services, ECEC services, community residents and government agencies. If you would like to find out more about this, please get in touch.

About Village

Village believes children are the heart of our community and deserve the best start to life possible. Village is an initiative using a [Collective Impact](#) framework that aims to transform early childhood systems across Belconnen. Village works collaboratively with families, communities, child and family support providers and government agencies to identify and address the issues facing young families. By working together, the community is stronger, more connected and better placed to meet the needs of children and families



Village Members

