



A Village for Every Child | Update June 2022

Village for Every Child has a vision that *'all children in Belconnen can be physically healthy, socially and emotionally strong, and ready to engage fully in learning and life'*

What's been happening in A Village for Every Child?

The last month has been busy delivering and planning a series of community workshops as part of our commitment to community consultation to help us understand our Belconnen community better. Through these workshops we want to capture views of different stakeholders across the Belconnen community, including families. The first series ([AEDC workshops](#)) of workshops, in partnership with the [AEDC](#) team, has focused on the most recent AEDC data (2021). This data tells us that more children in the ACT, particularly Belconnen, are experiencing high levels of developmental vulnerability. The second series (Belconnen Child and Family Community Profile workshops) is focused on collecting information about child wellbeing, that will be used to develop a Belconnen Child and Family Community Profile.

Village received some exciting news this week, to find out what this was, keep reading!

There are a number of other exciting projects going on at the moment that are in their early stages of development. More information on these can be found below.

What's been going on in the Working Groups?



Improved Transitions to School Working Group

Look out for an invitation to join the new **Improved Transitions Network** which is for Early Childhood Education and Care services (ECECs) and schools to share current transition practices and develop some shared strategies to support children and their families transitioning from an ECEC service to school (pre-school or kindergarten). It will be an informal network with the aim of working smarter not harder, sharing resources and connecting. Look out for more information on this in the coming month. Although we would love to invite all schools and ECEC services in Belconnen, we will start small and increase as the interest grows. Please contact Village if you are interested in being part of this network.



Improved Service and School Connections with Families

Discussions continue about how this group may support the concept of schools as communities. Following the work carried out with the Strathnairn school project (details below), there is appetite within the service sector and schools to look at ways of supporting children and families using a school setting. This group has connected with the Future of Education team at the Education Directorate who are also developing this concept and together they are exploring where this might lead.

The recent AEDC data has highlighted an increasing need in the Belconnen community and this group will be considering what opportunity there is for a collective response.



Better Data Working Group

Commencing in late June, the Better Data Group, as part of Village, is delivering a series of **Belconnen Child and Family Community Profile Workshops**. They will run from June to August and form part of a broader community engagement strategy over the year. We hope to engage families, service providers, schools, Early Childhood and Education and Care services in conversations about wellbeing for children

and families. Keep an eye out for more information on our [website](#) and details can be found below.

The intention is to bring the results of these conversations back to the broader Belconnen community (service providers, schools, ECECs and community members) so that we have a shared understanding of the needs unique to children and families living in Belconnen, with the intention of finding opportunities to work together to reduce developmental vulnerability in our children.

We invite you and your colleagues to join us in these important discussions.



Leadership Group

The Leadership Group welcomed Village's evaluators, [Clear Horizon Consulting](#) to discuss the Monitoring, Evaluation and Learning (MEL) process. Measuring the impact of place based initiatives that use the collective impact framework is challenging because in the first few years, much of the focus is on setting up the conditions for the work to happen and not a lot of population level impacts occur. Many impacts are not seen for years. Village is committed to measuring and evaluating its work to ensure that it is creating the conditions that enable system change and to identify when impacts emerge, and through using the findings as part of a continuous learning process, Village is refining and improving its practice. Village's MEL process is ongoing in this foundational phase of the initiative and will work closely with partners to respond to the recommendations provided.



Other News

Connected Beginnings

We are very excited to announce that following the Department of Education, Skills and Employment

invitation to Village to tender for the [Connected Beginnings](#) program we have been successful. Village looks forward to expanding the Backbone and having the resources to increase its work with the Aboriginal and Torres Strait Islander community.

Schools as Communities

This project continues to build momentum. Village, [Ginninderry](#), [ARACY](#) and the [Education Directorate](#) have further discussed the role that Village can play in progressing the schools as communities focus in the Future of Education strategy. There is an opportunity for Village to trial and test ideas in the Belconnen community alongside work that the Directorate are doing in this space. Village continues to consider ways to support the Education Directorate to develop the new Strathnairn school design. With thanks to one of our Village partners ARACY, we have been able to invite Matthew Cox, from the [Bryan Foundation](#), to present on their collaboration with the Queensland Government to develop and deliver [FamilyLinQ](#): Queensland's first two integrated school-based hubs. *"FamilyLinQ will bring together education, health and community services under one roof, to form dynamic, integrated school-based community hubs to improve the health, education and life outcomes for students and their families"* (Familylinq, 2022). Please check our website for updates on this project.

Welcoming New Members

This quarter we welcomed four new members from a range of organisations, The Smith Family, Community Services Directorate, Canberra Health Services and Yerrabi Yurwang.

Upcoming Activities and Events

AEDC Workshop series – Village was really pleased to support the delivery of the AEDC Workshops with Tracy Powers from the AEDC team over the last month. We were thrilled to see so many organisations and service providers come together to discuss the AEDC data. There was a lot of discussion about why Belconnen children were experiencing higher levels of developmental vulnerability and ideas were shared about what services can be doing to increase the number of children developmentally on track. We hope to continue the conversations started in these workshops and invite you to the Community Profile Workshops series starting in mid July (more details below).

For schools and the ECEC sector, don't miss out on Workshop 3 which is being held on the 25th of July. This workshop will focus on what you are already doing and what can be done to support Belconnen ECECs and schools to work with and reduce the number of developmentally vulnerable children. A huge thank you to Tracy Powers, AEDC, for partnering with us to make the AEDC data accessible to

the Belconnen and broader community.

A summary from all the workshops will be collated and available on our website.

“It was alarming to hear about the Belconnen area and I was very surprised about the data”

“It was really good to discuss the issues and find out why this might be occurring and then looking at solutions”



Belconnen Child and Family Community Profile Workshops - This series of workshops will build on the conversations of the AEDC workshops and will focus on understanding what wellbeing means for children. It will also explore what information and data we need to collect to help inform where we focus our efforts. The Community Profile will help us understand who our Belconnen children and families are and how they are doing, as well as what is important to them. It will be a key resource that Village, its partners and other service providers can use to inform their priorities and it will be a tool for Village to further engage with community, through a series of roadshows.

These roadshows will ask the community to reflect on what the data is telling us and what the story behind the data is.

Workshop 1 – Village partners (LG/WG)

Session 1 : Monday 20th June 10 am -12pm

Workshop 2 – Service providers including schools and ECECs

Session 1 : Thursday 28th July 1 - 3 pm

Session 2 : Monday 1st August 10am -12pm

Workshop 3 – : Community residents (Belconnen).

Session 1 : Monday 22nd August 10am – 12pm

Session 2 : Saturday 27th August 10am – 12pm

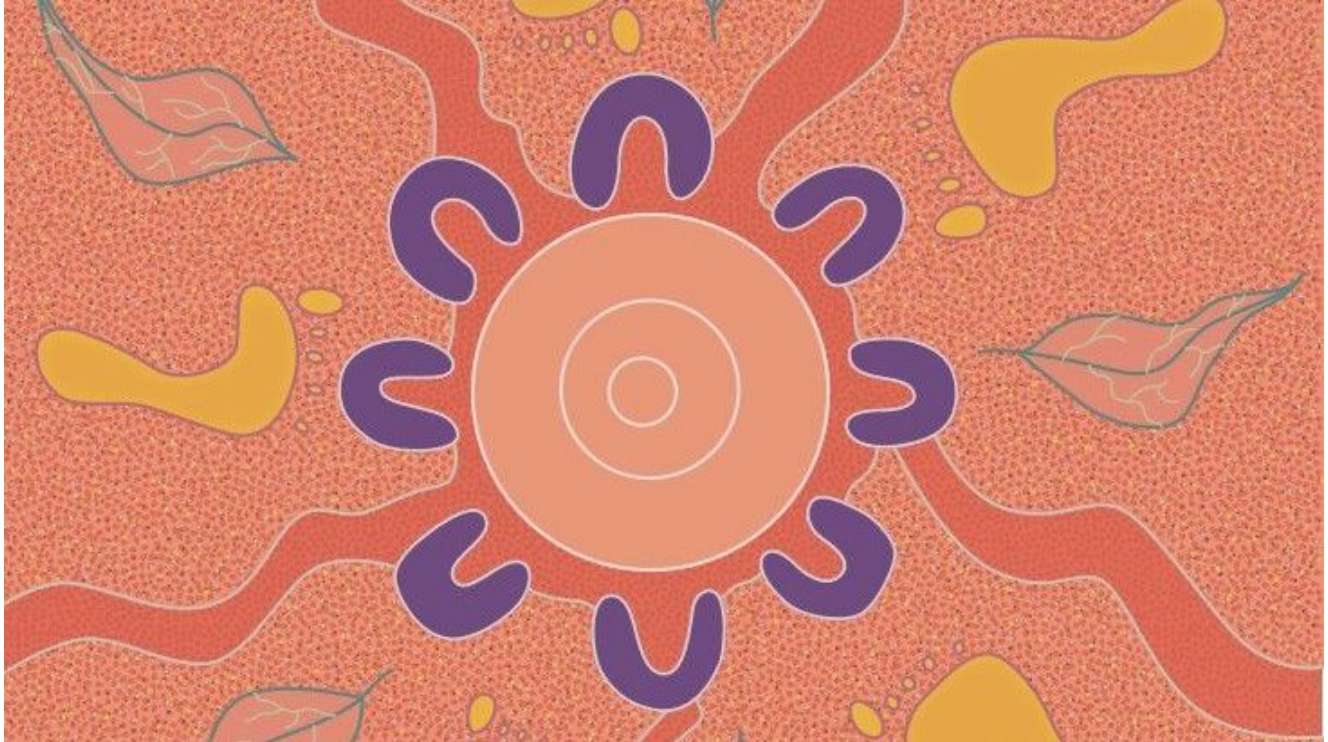
Get Involved

Have your say – Are you a kindergarten or preschool teacher, a principal/deputy principal, executive teacher or junior school leader working in Belconnen? We would love to hear from you about what teachers in pre-school or kindergarten need to know about children coming into their classroom, how they would like to receive this information (what format) and when, so that they can be prepared and able to support these children's needs. Please keep an eye out for an invitation from our research partner at ARACY who will be inviting you to participate in this short individual or group interview (duration 30-40 minutes, conducted via phone, video conferencing or in person).

Join us in a Working Group – We are always on the lookout for new members to join our working groups – from schools, child and family services, ECEC services, community residents and government agencies. If you would like to find out more about this, please get in touch.

About Village

Village believes children are the heart of our community and deserve the best start to life possible. Village is an initiative using a [Collective Impact](#) framework that aims to transform early childhood systems across Belconnen. Village works collaboratively with families, communities, child and family support providers and government agencies to identify and address the issues facing young families. By working together, the community is stronger, more connected and better placed to meet the needs of children and families



Village Members

